



# MUZZY

BROADHEADS

## 2016 CATALOG



MUZZY.COM



# There is nothing like the trophy you shot.



It's one of a kind. It is your story from beginning to end. The size of the antlers, the age of the deer, the location, time of day were all part of a moment in time never to be repeated.

You chose the spot many years ago. This is not the first animal you've killed here nor will it be the last. You know every facet of the landscape and the game trails that have been used for centuries. This ritual is not new to you, it's been played out by generations of your family.

A collection of trophies defines your history. Every one has a unique story. The stories have been repeated over and over at camp. Everyone has heard them repeated many times over the years, but they just keep getting better. They are trophies they all remember and admire. They define your families legacy.

A lot of things are changing in this world but some things remain constant. Bowhunting is your tradition. Your history. It's what defines you.

You own this!





## TROCAR SWITCH

- Adjustable cutting diameters, SWITCH the blades between 3 different cutting diameters without removing the blades. 1", 1 1/8" & 1 1/4"
- Allows complete tuneability of the broadhead to your setup maximizing performance no matter the size of the game or shooter.
- .035" right helix blades
- Trocar solid steel ferrule
- Trocar tip

PART #	# OF BLADES	GRAIN	CUTTING DIA.
296	3	100	Adjustable



## TROCAR HB HYBRID BROADHEAD

- Set of 1" fixed blades
- Set of 1 5/8" expandable blades
- 2 5/8" of total cutting surface
- .035" offset fixed blades
- Trocar solid steel ferrule
- Trocar tip

PART #	# OF BLADES	GRAIN	CUTTING DIA.
297	4	100	1 5/8" x 1"



## TROCAR HBX HYBRID CROSSBOW BROADHEAD

- Larger diameter ferrule to match crossbow bolt for improved penetration and flight
- Set of 1" fixed blades
- Set of 1 5/8" expandable blades
- 2 5/8" of total cutting surface
- .035" offset fixed blades
- Trocar solid steel ferrule
- Trocar tip

PART #	# OF BLADES	GRAIN	CUTTING DIA.
298	4	100	1 5/8" x 1"





## 3 BLADE

- Trocar solid steel ferrule
- .035" right helix blades
- 1 3/16" cutting diameter
- Trocar tip

PART #	# OF BLADES	GRAIN	CUTTING DIA.
290	3	100	1 3/16"

## DEEP SIX

- Trocar solid steel ferrule
- .035" right helix blades
- 1 3/16" cutting diameter
- Trocar tip

PART #	# OF BLADES	GRAIN	CUTTING DIA.
291	3	100	1 3/16"

## CROSSBOW

- Larger diameter ferrule to match crossbow bolt for improved penetration and flight
- Trocar solid steel ferrule
- .035" right helix blades
- 1 3/16" cutting diameter
- Trocar tip

PART #	# OF BLADES	GRAIN	CUTTING DIA.
292	3	100	1 3/16"
293	3	125	1 3/16"

## TROCAR SWITCH

- Adjustable cutting diameters, SWITCH the blades between 3 different cutting diameters without removing the blades. 1", 1 1/8" & 1 1/4"
- Allows complete tuneability of the broadhead to your setup maximizing performance no matter the size of the game or shooter.
- .035" right helix blades
- Trocar solid steel ferrule
- Trocar tip

PART #	# OF BLADES	GRAIN	CUTTING DIA.
296	3	100	Adjustable

## TROCAR HB HYBRID BROADHEAD

- Set of 1" fixed blades
- Set of 1 5/8" expandable blades
- 2 5/8" of total cutting surface
- .035" offset fixed blades
- Trocar solid steel ferrule
- Trocar tip

PART #	# OF BLADES	GRAIN	CUTTING DIA.
297	4	100	1 5/8" x 1"

## TROCAR HBX HYBRID CROSSBOW BROADHEAD

- Larger diameter ferrule to match crossbow bolt for improved penetration and flight
- Set of 1" fixed blades
- Set of 1 5/8" expandable blades
- 2 5/8" of total cutting surface
- .035" offset fixed blades
- Trocar solid steel ferrule
- Trocar tip

PART #	# OF BLADES	GRAIN	CUTTING DIA.
298	4	100	1 5/8" x 1"







## 3 BLADE

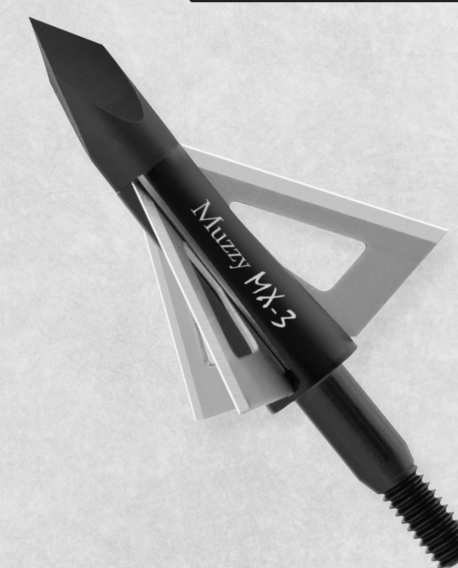
- Use in standard inserts
- .020" blades
- Trocar tip

PART #	# OF BLADES	GRAIN	CUTTING DIA.
207	3	75	1"
225	3	100	1 3/16"
235	3	125	1 3/16"

## MX-3

- Use in standard inserts
- .025" blades
- Trocar tip

PART #	# OF BLADES	GRAIN	CUTTING DIA.
207MX3	3	75	1 3/16"
225MX3	3	100	1 1/4"
235MX3	3	125	1 3/16"



## 4 BLADE

- Use in standard inserts
- .020" blades
- Trocar tip

PART #	# OF BLADES	GRAIN	CUTTING DIA.
205	4	90	1"
209	4	100	1"

## MX-4

- Use in standard inserts
- .025" blades
- Trocar tip

PART #	# OF BLADES	GRAIN	CUTTING DIA.
209MX4	3	100	1 1/8"



Note: Replacement blades and practice blades are available for all products. Please contact Muzzy for more details.

Note: Replacement blades and practice blades are available for all products. Please contact Muzzy for more details.







## 3 BLADE CROSSBOW

- Larger diameter ferrule to match crossbow bolt for improved penetration and flight
- .020" blades
- Trocar tip

PART #	# OF BLADES	GRAIN	CUTTING DIA.
225X	3	100	1 3/16"
235X	3	125	1 3/16"

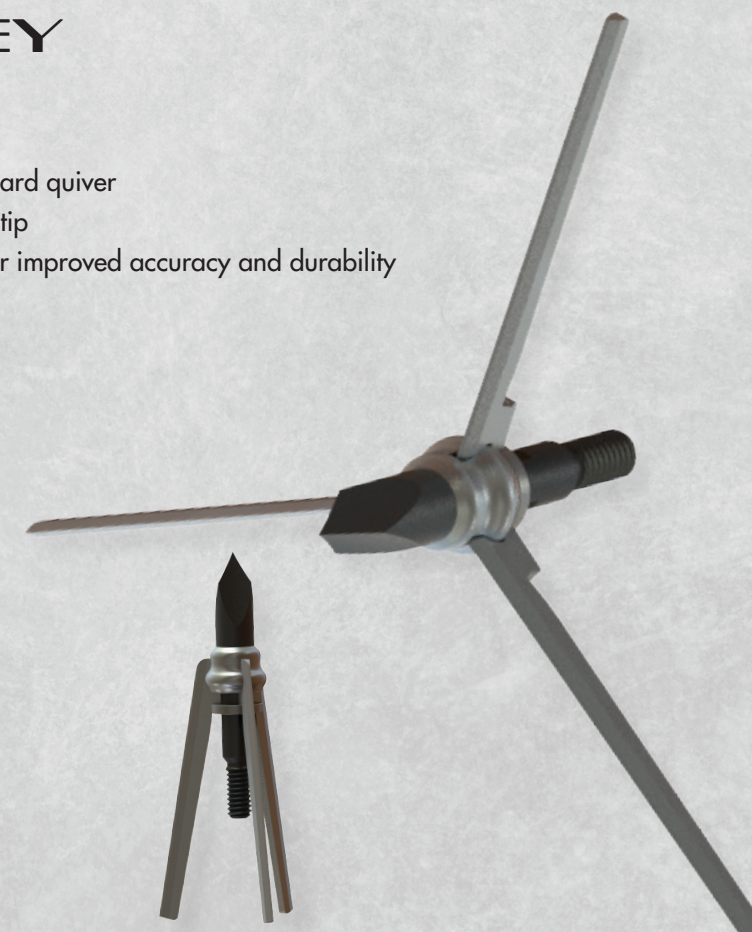
Note: Replacement blades and practice blades are available for all products. Please contact Muzzy for more details.



## M.O.R.E. TURKEY BROADHEAD

(MERRIAMS. OSCEOLA. RIO. EASTERN)

- Locks closed in 1" diameter to fit in any standard quiver
- Locks into shooting position by tightening the tip
- .051" blades and a 1.5 degree right offset for improved accuracy and durability



PART #	# OF BLADES	GRAIN	CUTTING DIA.
115	3	125	3"

Note: Replacement blades and practice blades are available for all products. Please contact Muzzy for more details.

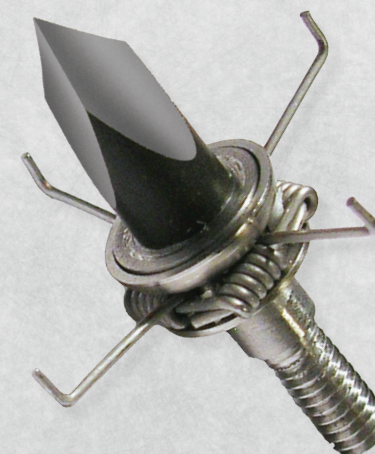




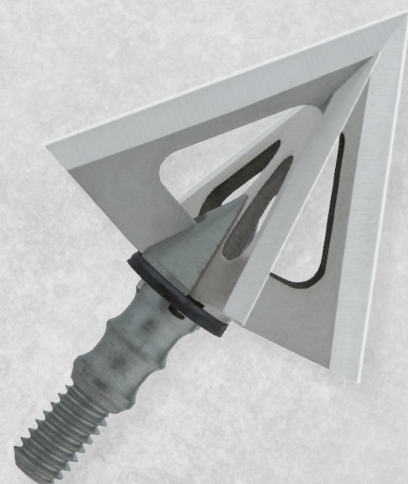
## SG-X SMALL GAME GRASSHOPPERS

The Muzzy SG-X small game head is a stainless steel head designed for small game. It features a replaceable Trocar tip, spring loaded arms and a stainless steel body.

\*NOTE: Grasshopper small game adapter available in 3 packs, assembled #110



PART#	GRAIN
112	100
113	125



## PHANTOM SC

- Use in standard inserts
- Solid steel design
- .050" blades

PART #	# OF BLADES	GRAIN	CUTTING DIA.
4300	4	100	1 1/8"
4400	4	125	1 1/8"



## PHANTOM 4 BLADE

### 100 GRAIN

- .036" main blade
- .028" bleeder blade

### 125 GRAIN

- .040" main blade
- .028" bleeder blade

PART #	# OF BLADES	GRAIN	CUTTING DIA.
4100	4	100	1 1/8"
4125	4	125	1 1/8"

Note: Replacement blades and practice blades are available for all products. Please contact Muzzy for more details.



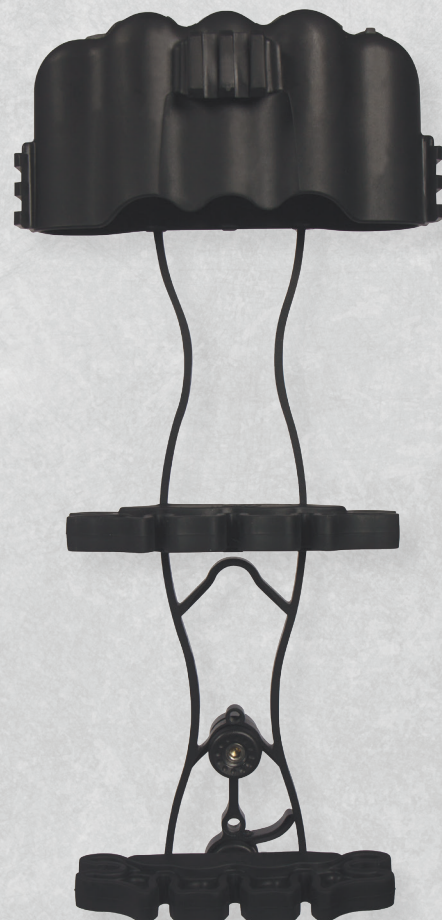


## TAQ 5 QUIVER

- Vibration dampening rubber
- Tough, lightweight aluminum frame
- Works with any arrow, including micro diameter
- Crossbow compatible
- Can accept most any tactical accessory such as flashlights, or action cameras
- 3 picatinny rails
- Twist lock mounting bracket
- 5 arrow capacity
- Works with fixed blades or expandables

PART #

405



## BLADE SHARPENER

The Muzzy Redi Edge Broadhead Sharpener is the last Broadhead Sharpener you will ever need! Features a unique custom angle that allows you to easily sharpen any Muzzy Broadhead in only a few smooth strokes. Also features replaceable Duromite Sharpeners that produce the same sharp edge every time.

PART #

375



**Nate Hosie**  
*Headhunters TV*



**Randy Birdsong**  
*Headhunters TV*



**Tim Anello**  
*Inside Outdoors*



**Pat Reeve**  
*Driven TV*



**Nicole Reeve**  
*Driven TV*



**Dave Poteat**  
*Inside Outdoors*



**Eva Shockey**  
*Hunting Adventures*



**Jackie Bushman**  
*Buckmasters*





MUZZY.COM