

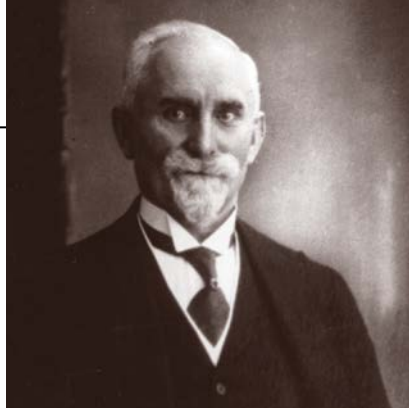


SHOTGUN SLUGS & SABOTS

A DEER'S WORST NIGHTMARE SINCE 1898.



In 1895, Wilhelm Brenneke was **not** happy.



An avid hunter and outdoorsman, Germany's Wilhelm Brenneke was not pleased with the underpowered, inefficient hunting ammunition available at the time. It resulted in far too many game animals wounded and lost. Wilhelm respected these magnificent creatures far too much to tolerate such suffering and waste. So, he set out to create an entirely new projectile having vastly superior stopping power combined with superb accuracy.

Wilhelm Brenneke
after one of the
many successful
tests of his
invention.



He succeeded beyond his wildest dreams. In 1898, he introduced the first Original Brenneke® slug. Its massive weight-forward construction and broad frontal area delivered unprecedented energy at the target. Even a poorly placed shot almost always resulted in a substantial blood trail and nearby downed game. It was the very first successful shotgun

slug, and the basis for countless millions of Brenneke slugs and sabots that have since proven themselves throughout the world. Since 1898, we have constantly improved upon Wilhelm's creation wherever possible...and adapted innovative new technology, including lead-free designs, all of which completely adhere to his principles of humane, quick harvesting of the game we hunt. Even so, Brenneke remains a small company, still headquartered in Germany, committed to quality over quantity. We think Wilhelm would be very happy. His customers certainly are.



The inherent weight, huge frontal area, integral cone and sharp cutting edges of the Original Brenneke® design delivers tremendous shock and energy to the target...often exceeding that of many popular "deer rifles."

Brenneke slugs have taken some of the largest, most dangerous game animals on earth, including Cape buffalo...a testament to Brenneke power and lethality.



Brenneke's original 1898 design. The frontal cone would be added a few years later.



By the 1930s, Wilfred Brenneke's slugs, perfected on big game throughout the world, had assumed the familiar shape that has since been copied—but not surpassed—by virtually every shotgun slug manufacturer.

In this photo, the Brenneke Green Lightning® (far left) compared to several competitive rounds after firing into ballistic gelatin. Note the excessive expansion of the other slugs compared to Brenneke. This can mean insufficient penetration and a wounded animal.



Penetration is good. Excessive expansion is not.

Shotgun slugs and rifle bullets do their jobs in very different ways. While "controlled expansion" is desirable in a rifle bullet, it is the exact opposite of how a slug or sabot should perform. Brenneke slugs are made with sophisticated alloys that result in very hard projectiles. They expand very little, if at all, when striking a game animal...penetrating deeply through bone and muscle. They maintain a consistent path after impact, creating a devastating wound channel while retaining the slug's inherent integrity and almost all of its original weight. Many slug manufacturers brag about "expansion," resulting in flattened, deformed projectiles. That is simply a result of soft, inferior, less costly alloys. Penetration can be minimal, stopped or deflected by any hard object. You can always find cheaper ammunition. But, what is a trophy worth?



"Some of the most accurate 'new' slugs are built on a design that's been around for a century. If you need knockout power that comes with surgical precision, get your hands on some Brenneke K.O. slugs...[they] will do everything you want them to do and at ranges beyond the limits of your skills."
—Kevin Michalowski, Gun Digest

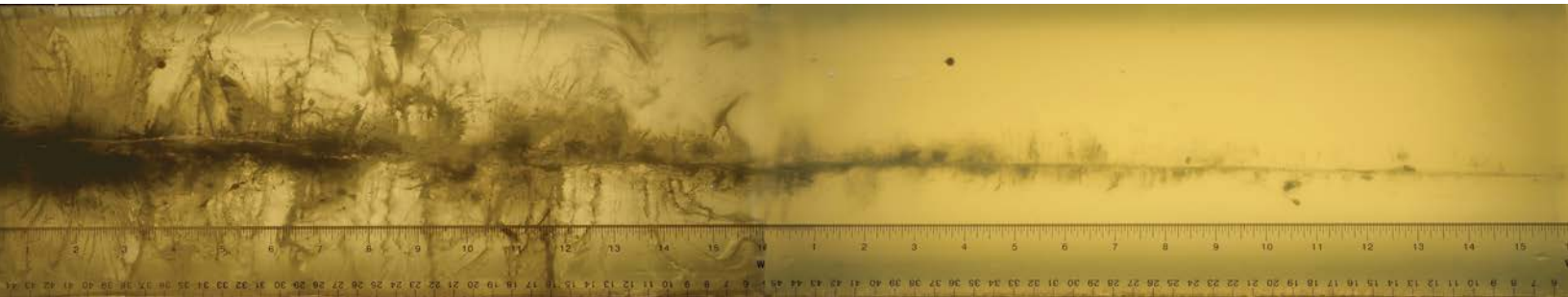
800/753-9733 | www.brennekeusa.com
info@brennekeusa.com



Index

Testing and technology	4
Deer-sized game	
Classic Magnum™ 12 gauge 2 ¾"	6
K.O.® 12 gauge 2 ¾"	7
K.O.® 20 gauge 2 ¾"	7
Green Lightning® HFS Magnum 12 gauge 2 ¾"	8
Green Lightning® HFS Magnum 20 gauge 2 ¾"	8
Classic Magnum™ 16 gauge 2 ¾"	9
Brenneke 16™ 16 gauge 2 ½"	9
Red Magic™ Sabot 12 gauge 2 ¾" and 3"	10
TOPAS® Sabot 12 gauge 2 ¾"	10
Magnum™ 20 gauge 3"	11
Orange Lightning® 12 gauge 2 ¾"	11
Large & dangerous game	
Bear Protection 12 gauge 2 ¾" & Magnum 2 ¾"	12
Black Magic® Magnum 12 gauge 3"	13
Magnum Crush™ 12 gauge 3"	13
Small game & target shooting	
Brenneke 28™ 28 gauge 2 ¾"	14
Magnum™ .410 3"	15
Close Encounter™ .410/.45 Colt 2 ½"	15
Lead-free/non-toxic	
TKO® Sabot 12 gauge lead-free 2 ¾"	16
TOPAS® Sabot 20 gauge lead-free 2 ¾"	17
Orange Lightning® 12 gauge lead-free 2 ¾"	17
SuperSabot™ 12 gauge lead-free 2 ¾" and 3"	17
Home protection	
Self Defense™ 12 gauge Less Lethal 2 ¾"	18
Tactical Home Defense™ 12 gauge 2 ¾"	19
Tactical Home Defense™ 20 gauge 2 ¾"	19
Mini Slug 12 gauge 2"	19

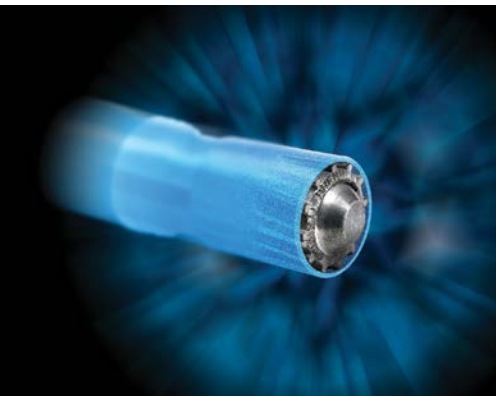
Tradition meets technology.



While we are certainly proud of our history and tradition over more than a century, at Brenneke we never stop experimenting, testing, improving, and employing sophisticated technology wherever possible to make our products even better.

We're not afraid to test our products against those of our competitors, as noted on this page. We're not afraid to try radical new ideas, as evidenced by our extensive research into lead-free technology.

We remain a small company, headquartered not far from where Wilhelm Brenneke first conceived the shotgun slug. We have not sold out to a big, faceless conglomerate, as so many have. We believe in proven performance, not advertising claims. Ammunition is all we make. So it has to be good.



Our TOPAS® 20 gauge sabot and TKO® 12 gauge slug represent a major technological advance in lead-free shotgun ammunition. They were introduced only after years of research and testing, arriving at a non-toxic alloy of tin that produces the excellent accuracy and energy that has defined Brenneke since 1895. We are not afraid to experiment. Or to invest in the future.



Why does Brenneke offer so many different shotgun slugs?

Because hunters are different. Aside from the obvious variations in shotgun gauges and chamberings, every environment, the game pursued, and individual preferences also vary widely. Heavier slugs can more easily brush aside twigs and leaves that might be between hunter and target in thick, tangled forests. Hunters who find themselves shooting at longer distances might prefer a lighter slug with the flattest possible trajectory. Downing a big north country buck can require deeper penetration and power than is necessary to drop one of his smaller southern cousins. Cost can also be an issue. And, individual shotguns will almost always prefer one slug over another. We want you to be covered, whatever and wherever you hunt.

The above photo shows the path made through two blocks of ballistic gelatin by a Brenneke Green Lightning® slug. It split the first block completely in two, blowing the halves three feet into the air. The right half was blown four feet forward. The slug continued into a third block of gelatin. Total penetration, 39.4 inches.

A series of independent ballistic tests compared Brenneke slugs against six competitors. Each was fired into FBI-spec ballistic gelatin, with penetration photographed and measured.

The Brenneke Green Lightning® penetrated 34.9". The nearest competitor? Just over 29". One, only 11.12", with the others somewhere in between.













Above, the Green Lightning® slug captured by high-speed photography exiting a 6" x 6" x 16" block of FBI-spec calibrated gelatin. Its devastating power is obvious.



It might sound odd that Alaska is one of our better markets for shotgun slugs... a state known more for rifle hunting. That's because Alaska police, wildlife officers, and search and rescue agencies, who must venture into the back country, know there is no surer, quicker way to stop a grizzly or an angry moose than with one of our most powerful 12 gauge slugs.

Choosing the right Brenneke® slug

The symbols you will see accompanying each of our slugs and sabots will help you choose the proper slug for your intended use.

-  The heaviest, thick-skinned, and/or dangerous game, including buffaloes, grizzly and brown bears, lions, etc.
-  Moose, elk, red stag, etc.
-  Black bear and similar size animals
-  Whitetail and other deer
-  Wild boar and similar size game
-  Coyotes and other predators
-  Rabbits, squirrels, other small game
-  Home protection
-  Law enforcement
-  Target shooting

A three-shot group at 88 yards with our Black Magic® Magnum, submitted by a happy Brenneke customer.



Shooting for maximum accuracy and effectiveness

In this catalog you will see a recommended "Optimum sighting in distance" for each slug and sabot. We've found that in most cases, this is an ideal starting distance to zero your shotgun for the optimum trajectory across the projectile's recommended range.

You will also see "Range" noted for each product. Because of our heritage of ethical hunting, we are intentionally conservative in these figures. Certainly, Brenneke slugs and sabots are capable of lethal performance well beyond 100 yards. We are disturbed, however, by claims of "long range" slugs made by some manufacturers.

Unbiased tests of some of these "long range" slugs at 100 yards resulted in five-shot groups of 5.58" and higher. At 200 yards, this is an eleven-inch spread, more than enough to miss the vital area of a deer entirely.

If you would like to explore the outer reaches of your shotgun, there is no substitute for a lot of practice on the range. You can then go afield with utter confidence in your shotgun and your load.



Deer are tough creatures, and no one wants to lose a wounded animal. The ethical hunter demands a powerful projectile that will drop a deer in its tracks...or at the very least, in the case of a less-than-perfect shot, create a substantial blood trail that results in an easy-to-find, quickly and humanely killed animal. Brenneke offers several loads that assure this reliability for shooters of all gauges and barrels.



Classic Magnum™ 12 ga 2 ¾" 1 ⅛ oz

"Classic" is not just a name. A classic in every regard, the Classic Magnum is a direct descendant from Wilhelm Brenneke's first revolutionary designs. For decades it has been one of our most popular, enduring loads.

The Classic Magnum puts magnum power into 2 ¾" shotguns with its heavy, weight-forward 1 ⅛ oz. slug, generating superb energy combined with a flat trajectory. The Classic's felt wad provides excellent accuracy, while helping to keep your barrel clean.

It would be hard to choose a more capable all-around slug for deer-sized game. The Classic Magnum has given countless deer around the world countless nightmares.

Range (yards)	Muzzle	25	50	75	100
Velocity (ft./sec.)	1,510	1,312	1,155	1,047	974
Energy (ft./lbs.)	2,460	1,859	1,439	1,182	1,025
Bullet path (inch)	-2.0	+0.3	+1.3	+0.7	-1.9
Optimum sighting-in distance 84 yards					

Weight:	1 ⅛ oz.
Barrel:	Rifled or smoothbore
Range:	80 yards+
Game:	Large, deer-sized
Accuracy:	Five-shot groups under 3" at 50 yards
Symbol:	SL-122CLM



What are the ribs for?

The distinctive ribs on Brenneke slugs are not designed to impart spin to the projectile. They make it possible to shoot most of our lead slugs (unless noted otherwise) through any choked shotgun barrel.

When a Brenneke slug travels through the three restricted areas of a shotgun barrel (forcing cone, bore and choke), the ribs are compressed, allowing the slug to safely pass through these areas while maintaining its original cylindrical shape for better stabilization and accuracy.



K.O.® 12 ga 2 ¾" 1 oz

An old saying goes, "you get what you pay for." With K.O. slugs, that's not entirely true. You get a lot more than you pay for. Since their introduction well over two decades ago, hunters have come to value K.O. performance as much as their reasonable price.

An improved Foster design, in both 12 and 20 gauge, provides deadly knockdown power and terrific accuracy. Their specially designed wads generate high velocity and a remarkably flat trajectory. And, all K.O. slugs are equally at home in rifled or smoothbore barrels.

Range (yards)	Muzzle	25	50	75	100
Velocity (ft./sec.)	1,650	1,420	1,231	1,094	1,003
Energy (ft./lbs.)	2,645	1,957	1,473	1,164	977
Bullet path (inch)	-2.0	+0.5	+1.9	+1.8	0.0
Optimum sighting-in distance 100 yards					

Weight:	1 oz.
Barrel:	Rifled or smoothbore
Range:	75+ yards
Game:	Deer-sized
Accuracy:	Five shot 2" groups at 50 yards
Symbol:	SL-122KO



K.O.® 20 ga 2 ¾" ¾ oz

20 gauge shooters give up very little to their 12 gauge brethren when shooting K.O. 20s. In fact, they've become so popular, they outsell many of our 12 gauge loads.

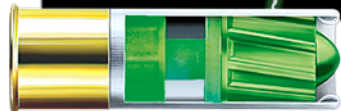
K.O. 20 gauge are an ideal choice for deer at medium ranges, retaining strong velocity and energy over a flat trajectory.

Whichever gauge K.O. you choose, you can be sure of one thing: they pack a punch.

Range (yards)	Muzzle	25	50	75	100
Velocity (ft./sec.)	1,550	1,344	1,180	1,064	984
Energy (ft./lbs.)	1,770	1,331	1,026	834	714
Bullet path (inch)	-2.0	+0.7	+2.1	+2.0	0.0
Optimum sighting-in distance 100 yards					

Weight:	¾ oz.
Barrel:	Rifled or smoothbore
Range:	50 yards+
Game:	Deer-sized
Accuracy:	Five-shot groups under 2 ½" at 55 yd
Symbol:	SL-202KO





Green Lightning® Heavy Field Short Magnum 12 ga 2 ¾" 1 ¼ oz

Check out the energy delivered by our Green Lightning—approaching that of many centerfire cartridges—and you’ll see why so many deer have checked out because of them.

In independent tests, Green Lightning’s penetration surpassed competitive slugs from Hornady®, Lightfield®, Remington®, Winchester® and Wolf® from a minimum of 25% to a whopping 67%. At 100 yards, its accuracy (five-shot groups) was an impressive 2.95". Most of the others, much worse. See page 5 for more details.

One of our heaviest slugs, at 1 ¼ oz., delivers devastating power at longer distances. The distinctive green coating helps reduce barrel fouling, too. Not that you should need more than one shot.

Range (yards)	Muzzle	25	50	75	100
Velocity (ft./sec.)	1,476	1,310	1,174	1,094	1,002
Energy (ft./lbs.)	2,538	2,000	1,606	1,346	1,170
Bullet path (inch)	-2.0	+0.4	+1.5	+1.0	-1.4
Optimum sighting-in distance 90 yards					

Weight:	1 ¼ oz.
Barrel:	Rifled or smoothbore
Range:	100+ yards
Game:	Deer-sized
Accuracy:	Five-shot groups under 2" at 50 yards
Symbol:	SL-122HSFGL



Green Lightning® Heavy Field Short Magnum 20 ga 2 ¾" 1 oz

You will never feel under-gunned with our Green Lightning, built around one of the heaviest 20 gauge slugs on the market. Even with the knockdown power our weight-forward design produces—10% larger than a .50 caliber rifle bullet—it has a very flat trajectory meaning you only need to aim where you want it to go.

Accuracy is exceptional, capable of five-shot groups under two inches at 50 yards...from rifled or smoothbore barrels.

The 20 gauge shooter can take to the field with full confidence that he or she is shooting one of the most deadly, efficient slugs in the world.

Range (yards)	Muzzle	25	50	75	100
Velocity (ft./sec.)	1,392	1,250	1,136	1,053	990
Energy (ft./lbs.)	1,886	1,520	1,257	1,079	954
Bullet path (inch)	-2.0	+0.5	+1.6	+1.0	-1.6
Optimum sighting-in distance 87 yards					

Weight:	1 oz.
Barrel:	Rifled or smoothbore
Range:	75+ yards
Game:	Deer-sized
Accuracy:	1.8" five-shot groups at 55 yards
Symbol:	SL-202HSFGL



Classic Magnum™ 16 ga 2 ¾" 1 oz

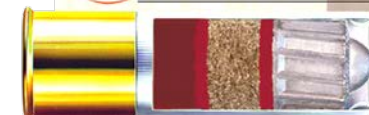
The Sweet Sixteen is enjoying a renaissance among shotgunners, with good reason. More power than a 20, less weight than a 12. We’ve adapted our Classic Magnum to this classic gauge, featuring an H-type disk that reduces deformation and improves accuracy up to 50%.

The felt wad helps keep your barrel clean, while also contributing to outstanding accuracy.

It’s sweet.

Range (yards)	Muzzle	25	50	75	100
Velocity (ft./sec.)	1,480	1,370	1,200	1,078	995
Energy (ft./lbs.)	2,309	1,736	1,332	1,075	915
Bullet path (inch)	-2.0	+0.6	+2.0	+1.9	0.0
Optimum sighting-in distance 94 yards					

Weight:	1 oz.
Barrel:	Rifled or smoothbore
Range:	75+ yards
Game:	Deer-sized
Accuracy:	Five-shot groups under 2 ½" at 50 yds
Symbol:	SL-162CLM



Brenneke 16™ 16 ga 2 ½" 1 oz

We haven’t overlooked 16 gauges having 2 ½" chambers, either. It features the same powerful Classic Magnum slug offered in our 2 ¾" 12 and 16 gauge loads, while maximizing velocity and energy from a smaller chamber.

Brenneke has given this classic shotgun chambering a new lease on life for hunting. It’s two and a half inches of unprecedented power and performance.

Range (yards)	Muzzle	25	50	75	100
Velocity (ft./sec.)	1,350	1,184	1,067	986	926
Energy (ft./lbs.)	1,686	1,298	1,053	900	793
Bullet path (inch)	-2.0	+0.8	+2.0	+1.3	-1.6
Optimum sighting-in distance 89 yards					

Weight:	1 oz.
Barrel:	Rifled or smoothbore
Range:	75+ yards
Game:	Deer-sized
Accuracy:	Five-shot 3" groups at 50 yds
Symbol:	SL-162BR





Red Magic™ Sabot

12 ga 2 3/4" and 3" 1 oz

Frankly, for a long, long time, we did not think much of sabots. Yes, they were capable of fine accuracy, but at the cost of knockdown power and penetration. We considered most sabots on the market to be weaklings.

Only after several years of research and experimenting did we arrive at sabotaged slugs we felt worthy of the Brenneke name... like the Red Magic. We adapted the traditional Brenneke design to sabot technology, arriving at a projectile with 58% more frontal area than standard .50 caliber slugs, retaining the massive energy transfer and deep penetration we are known for. The Red Magic is attractively priced, too, so they're easy on your wallet. But very hard on a deer.

Red Magic 2 3/4"

Range (yards)	Muzzle	25	50	75	100
Velocity (ft./sec.)	1,584	1,408	1,258	1,140	1,053
Energy (ft./lbs.)	2,407	1,901	1,519	1,246	1,063
Bullet path (inch)	-2.0	+0.4	+1.8	+1.7	0.0
Optimum sighting-in distance 100 yards					

Red Magic 3"

Range (yards)	Muzzle	25	50	75	100
Velocity (ft./sec.)	1,756	1,563	1,389	1,243	1,128
Energy (ft./lbs.)	2,958	2,343	1,852	1,482	1,221
Bullet path (inch)	-2.0	+0.1	+1.3	+1.3	0.0
Optimum sighting-in distance 100 yards					

Weight:	1 oz.
Barrel:	Rifled or smoothbore
Range:	100+ yards
Game:	Deer-sized
Accuracy:	Five-shot groups under 3" at 100 yd
Symbol:	SL-122RMS (2 3/4") SL-123RMS (3")



TOPAS® Sabot

12 ga 2 3/4" 2/3 oz

"Shockingly different" is how we describe the TOPAS sabot, and is it ever. It is shockingly reasonable in price, but much higher in quality than ordinary mass-produced Foster-type slugs. In a very short time, the TOPAS has become one of our most popular hunting loads. TOP Accuracy and Speed—which it derives its name—is why.

Its large frontal area is equal to a 16 gauge slug, delivering a huge shock to game even at longer ranges. Suitable for rifled or smoothbore shotguns, you'll be shocked at how brilliantly it performs.

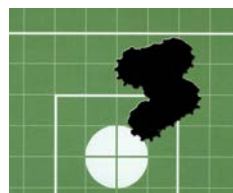
Range (yards)	Muzzle	25	50	75	100
Velocity (ft./sec.)	1,673	1,496	1,342	1,211	1,109
Energy (ft./lbs.)	1,919	1,536	1,233	1,005	843
Bullet path (inch)	-2.0	-0.4	0.0	-1.0	-3.9
Optimum sighting-in distance 50 yards					

Weight:	2/3 oz.
Barrel:	Rifled or smoothbore
Range:	75+ yards
Game:	Deer-sized
Accuracy:	Five-shot 2" groups at 40 yards
Symbol:	SL-122TOP



About Brenneke accuracy

Throughout this catalog you will see group sizes noted for every Brenneke product. These are not "pie in the sky" exaggerated claims designed to impress; they are the results of test firing each product through off-the-shelf shotguns at our headquarters in Germany. And, they are five-shot groups, not just three, demonstrating the consistency and repeatability of Brenneke designs. Your results may vary, of course. They might even be better.



20 Gauge Magnum

20 ga 3" 1 oz

A heavy one-ounce Brenneke® slug, backed by three inches of magnum power, makes your three-inch twenty put many 12 gauges to shame.

Velocity and energy both are excellent to 100 yards and beyond. The flat trajectory means no worries about holding high or low.

Bottom line, you cannot buy a slug that provides better performance in a 20 gauge shotgun. Or better performance on a deer.

Range (yards)	Muzzle	25	50	75	100
Velocity (ft./sec.)	1,476	1,322	1,193	1,094	1,022
Energy (ft./lbs.)	2,120	1,701	1,385	1,165	1,016
Bullet path (inch)	-2.0	+0.4	+1.5	+1.2	-1.0
Optimum sighting-in distance 91 yards					

Weight:	1 oz.
Barrel:	Rifled or smoothbore
Range:	90+ yards
Game:	Deer-sized
Accuracy:	Five-shot groups under 2" at 50 yards
Symbol:	SL-203M



Orange Lightning®

12 ga 2 3/4" 1 oz

If you're looking to save a few bucks on a slug that will flatten a buck, look no further than the Orange Lightning. The lowest-priced slug we offer, it is an excellent all-around load with plenty of energy, terrific accuracy (five-shot groups under 2 1/2" at 50 yards) and a full one ounce of Original Brenneke punch. Plus, it shoots equally well in smoothbore and rifled shotgun barrels.

If you like to shoot a lot, or simply don't want to pay more than necessary, the Orange Lightning is the answer. We cut no corners in its development and performance. All we cut was the cost.

Range (yards)	Muzzle	25	50	75	100
Velocity (ft./sec.)	1,476	1,271	1,118	1,016	945
Energy (ft./lbs.)	2,129	1,579	1,221	1,009	872
Bullet path (inch)	-2.0	+0.9	+2.5	+2.3	+0.1
Optimum sighting-in distance 100 yards					

Weight:	1 oz.
Barrel:	Rifled or smoothbore
Range:	90+ yards
Game:	Deer-sized
Accuracy:	Five-shot groups under 2 1/2" at 50 yd
Symbol:	SL-122OL



Brenneke slugs in a fast-handling shotgun are the choice for personal protection of many of Alaska’s professional wildlife and law enforcement officers who often find themselves on patrol in bear country. Why? Because no other projectile/firearm combination provides the instant, devastating stopping power—that can save their lives—during an unexpected encounter with an angry bruin.



Bear Protection
12 ga 2 ¾"
1 ¼ oz

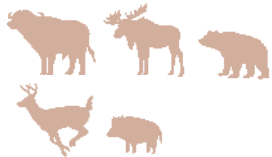
Developed specifically for those who spend time in bear country, whether for work or recreation, these loads feature our heaviest slugs and maximum energy transfer... up to 3,545 foot pounds at the muzzle. They will function beautifully in just about any 2 ¾" chamber, in rifled and smoothbore barrels.

Their large frontal area—nearly ¾" in diameter—transfers all that inherent energy over a broader front than the largest rifle bullet, resulting in instant shock and the best possible outcome in a bear/human encounter.

Standard					
Range (yards)	Muzzle	25	50	75	100
Velocity (ft./sec.)	1,476	1,310	1,174	1,075	1,002
Energy (ft./lbs.)	2,538	2,000	1,606	1,346	1,170
Bullet path (inch)	-2.0	+0.4	+1.5	+1.0	-1.4
Optimum sighting-in distance 90 yards					

Magnum					
Range (yards)	Muzzle	25	50	75	100
Velocity (ft./sec.)	1,650	1,416	1,227	1,090	998
Energy (ft./lbs.)	3,545	2,612	1,959	1,546	1,298
Bullet path (inch)	-2.0	+0.5	+1.9	+1.9	0.0
Optimum sighting-in distance 100 yards					

Weight:	1 ¼ (standard) 1 ¾ oz (magnum)
Barrel:	Rifled or smoothbore
Range:	100+ yards
Game:	Large, dangerous
Accuracy:	Five-shot groups under 2 ½" at 50 yd
Symbol:	SL-122BP (std) SL-122BPM (mag)



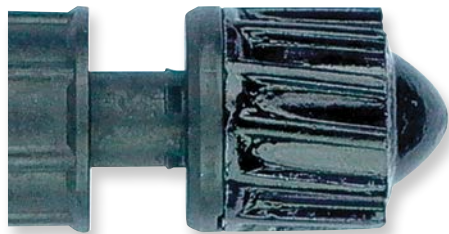
Black Magic® Magnum
12 ga 3" 1 ¾ oz

One of our most popular slugs for many years, the Black Magic Magnum will take on the world’s biggest, toughest creatures with ease. The black CleanSpeed™ coating virtually eliminates lead fouling in the barrel, and its patented B.E.T. wad assists in transferring maximum energy to the target and stabilizing its flight path.

It will obviously handle any deer on earth, and is an ideal choice for hunting bear and other dangerous game. For 3" chambers only, rifled or smoothbore barrels, it is cheapest life insurance you can buy.

Range (yards)	Muzzle	25	50	75	100
Velocity (ft./sec.)	1,502	1,295	1,136	1,030	995
Energy (ft./lbs.)	3,014	2,241	1,724	1,418	1,219
Bullet path (inch)	-2.0	+0.4	+1.6	+1.0	-1.8
Optimum sighting-in distance 88 yards					

Weight:	1 ¾ oz
Barrel:	Rifled or smoothbore
Range:	100+ yards
Game:	Large, dangerous
Accuracy:	Five-shot groups under 2" at 50 yards
Symbol:	SL-123BMM



If you need effective defense against dangerous animals, a heavy, quality shotgun slug is by far the best choice. Handguns pale in comparison; for example, the most powerful .44 magnum cartridges barely exceed 1200 foot pounds of muzzle energy. Rifle bullets will kill, but because they depend upon penetration and expansion, a bear can do a lot of damage before the bullet takes full effect. The instant shocking power of a Brenneke slug is the best defense you can have.



Magnum Crush™
12 ga 3" 1 ½ oz

If you are looking for the most powerful, devastating hunting slug we make, you’ve found it. For rifled barrels and 3" chambers only, its broad ribs provide optimum engagement of rifling grooves for excellent accuracy and a flat trajectory over its entire range. A special coating reduces lead fouling which can affect accuracy.

The Magnum Crush design has accompanied polar and scientific expeditions, African safaris and long journeys through the Alaskan wilderness... situations when stopping power can mean the difference between life and sudden death.

Choose the Magnum Crush when there is simply no room for error, no second chance.

Weight:	1 ½ oz
Barrel:	Rifled only
Range:	100+ yards
Game:	Large, dangerous
Accuracy:	Five-shot, 2 ½" groups at 50 yards
Symbol:	SL-123CMR

Range (yards)	Muzzle	25	50	75	100
Velocity (ft./sec.)	1,604	1,390	1,215	1,089	1,002
Energy (ft./lbs.)	3,804	2,856	2,185	1,752	1,485
Bullet path (inch)	-2.0	+0.6	+2.0	+1.9	+0.1
Optimum sighting-in distance 100 yards					





small game & target

We haven't overlooked the pleasures of smaller gauge shotguns, either. Brenneke slugs add versatility to small-bore guns typically limited to bird shot.



Brenneke 28™ 28 ga 2 3/4" 5/8 oz

Who doesn't enjoy the minimal weight and recoil of the 28 gauge? Now, that venerable shotgun can be anything but minimal with the power and speed of a Brenneke 28 slug. It is an excellent choice for small game, and would be lethal on a deer with proper shot placement at close ranges.

It is an ideal projectile for introducing a young person to slug shooting, or simply to expand the horizons of an often-overlooked classic shotgun. It can do double duty for home defense, too.

Range (yards)	Muzzle	25	50	75	100
Velocity (ft./sec.)	1,450	1,236	1,085	985	918
Energy (ft./lbs.)	1,318	958	739	612	529
Bullet path (inch)	-2.0	+0.7	+2.0	+1.5	-1.2
Optimum sighting-in distance 87 yards					

Weight:	5/8 oz
Barrel:	Rifled or smoothbore
Range:	50+ yards
Game:	Small to medium game, target
Accuracy:	Five-shot, 2 1/2" groups at 50 yards
Symbol:	SL-282BR



Magnum™ .410 .410 ga 3" 1/4 oz

Many hunters remember a .410 as their very first shotgun. But, the power and range provided by a Brenneke .410 Silver Slug is something entirely new.

Designed for three-inch chambers, the Magnum .410 is as accurate as many .22s, with vastly more power. It is a perfect way to introduce a youngster to both shotshells and slugs, to targets and small game, all with the same low-recoiling, economical firearm.

Range (yards)	Muzzle	25	50	75	100
Velocity (ft./sec.)	1,775	1,427	1,179	1,025	930
Energy (ft./lbs.)	781	517	352	266	219
Bullet path (inch)	-2.0	+0.2	+1.4	+1.0	-1.4
Optimum sighting-in distance 88 yards					

Weight:	1/4 oz
Barrel:	Rifled or smoothbore
Range:	50+ yards
Game:	Small game, varmints, target
Accuracy:	Five-shot, 2" groups at 50 yards
Symbol:	SL-4103M



Close Encounter™ .410 ga 2 1/2" 1/4 oz

Revolvers chambered for .410/.45 Colt cartridges are great home defense and trail firearms, and just plain fun to shoot. We created the Close Encounter to add even more versatility. Its large frontal area along with substantial weight and mass is vastly more powerful than a shotshell.

The Close Encounter will do double duty in a properly chambered .410 shotgun, as well, turning a mild-mannered gauge into a little powerhouse that produces tight groups and can cause great havoc among small game.

Range (yards)	Muzzle	25	50	75	100
Velocity (ft./sec.)	1,500	1,229	1,054	950	875
Energy (ft./lbs.)	578	388	285	232	197
Bullet path (inch)	-0.6	+0.4	+0.0	-2.3	-7.0
Optimum sighting-in distance 50 yards (shotgun)					

Weight:	1/4 oz
Barrel:	Rifled or smoothbore
Range:	50+ yards
Game:	Small game, home defense, target
Accuracy:	Five-shot, 3" groups at 50 yards
Symbol:	SL-4102CE



The Brenneke Close Encounter is a powerful, effective load in properly chambered .410..45 Colt revolvers, as well as in .410 2 1/2" shotguns.

In more and more areas, lead-free projectiles are being mandated for hunting. We anticipated this long ago, and have pioneered the development of non-toxic alternatives to lead that still provide legendary Brenneke performance. Our technology has been popular and proven in Europe for several years.

lead-free, non-toxic



TKO® Sabot Non-Toxic 12 ga 2 ¾" ⅔ oz

Tin. Yes, food-safe, non-toxic tin. After a great deal of research and testing, we can now offer a revolutionary hunting sabot that is completely safe for you. For a deer, however, that's a different story.

Over 2000 feet per second muzzle velocity. 2607 foot pounds of muzzle energy. And a flat trajectory to 100 yards and beyond. If that sounds like the hard-hitting, accurate, and deep-penetrating performance you expect from Brenneke, you're right.

The TKO performs brilliantly in rifled and smoothbore barrels both, with any choke. Safe for you, safe for the environment. Dangerous to deer.

Range (yards)	Muzzle	25	50	75	100
Velocity (ft./sec.)	2,001	1,716	1,463	1,253	1,102
Energy (ft./lbs.)	2,607	1,917	1,394	1,022	791
Bullet path (inch)	-2.0	+0.5	+1.6	+1.0	-1.6
Optimum sighting-in distance 80 yards					

Weight:	⅔ oz
Barrel:	Rifled or smoothbore
Range:	75+ yards
Game:	Deer-sized
Accuracy:	Five-shot, 2 ½" groups at 50 yards
Symbol:	SL-122TKO



TOPAS® Sabot Lead-Free 20 ga 2 ¾" ½ oz

Our TOPAS 12 gauge sabot is one of our most popular loads...so it is only fair to offer its exceptional performance to 20 gauge shooters, too. Plus, its food-safe tin is completely lead-free and non-toxic, at a non-toxic price.

Range (yards)	Muzzle	25	50	75	100
Velocity (ft./sec.)	1,903	1,562	1,322	1,127	1,006
Energy (ft./lbs.)	1,608	1,119	777	564	450
Bullet path (inch)	-0.8	0.0	0.0	-1.3	-4.3
Optimum sighting-in distance 50 yards					

Weight:	½ oz
Barrel:	Rifled or smoothbore
Range:	50-75 yards
Game:	Deer-sized
Accuracy:	Five-shot, 2" groups at 50 yards
Symbol:	SL-202TOPN



Orange Lightning® Lead-Free 12 ga 2 ¾" ⅔ oz

Brenneke power and performance in a traditional slug that just happens to be lead-free. The deer won't notice its attractive price, but you will.

Range (yards)	Muzzle	25	50	75	100
Velocity (ft./sec.)	1,640	1,465	1,313	1,186	1,090
Energy (ft./lbs.)	1,750	1,396	1,121	916	773
Bullet path (inch)	-0.8	+0.1	0.0	-1.4	-4.3
Optimum sighting-in distance 50 yards					

Weight:	⅔ oz
Barrel:	Rifled or smoothbore
Range:	50-75 yards
Game:	Deer-sized
Accuracy:	Five-shot, 2 ½" groups at 50 yards
Symbol:	SL-122OLN



SuperSabot Lead-Free 12 ga 2 ¾" and 3" 1 ½ oz

Many think that non-toxic ammunition is a recent innovation. Brenneke created the remarkable SuperSabot well over two decades ago, long before lead-free became fashionable. For use in rifled barrels only, it remains a remarkable achievement, a projectile of devastating power and accuracy rivaling that of many centerfire rifles at over 100 yards.

The SuperSabot has a frontal area of .63", compared to the .50" to .57" area of ordinary sabots. Upon penetration, it expands up to a full one inch in diameter, creating a wound channel few other projectiles can match in any firearm.

Offered in 2 ¾" and 3" versions, it is simply one of the most powerful, precise sabots you can buy.

SuperSabot 2 ¾"					
Range (yards)	Muzzle	25	50	75	100
Velocity (ft./sec.)	1,407	1,274	1,165	1,080	1,017
Energy (ft./lbs.)	2,157	1,770	1,478	1,272	1,127
Bullet path (inch)	-2.0	+0.4	+1.6	+1.1	-1.3
Optimum sighting-in distance 89 yards					

SuperSabot 3"					
Range (yards)	Muzzle	25	50	75	100
Velocity (ft./sec.)	1,525	1,376	1,248	1,144	1,065
Energy (ft./lbs.)	2,536	2,064	1,697	1,426	1,236
Bullet path (inch)	-2.0	+0.2	+1.2	+0.9	-1.1
Optimum sighting-in distance 94 yards					

Weight:	1 ½ oz
Barrel:	Rifled only
Range:	100+ yards
Game:	Deer (2 ¾"), bear, moose, etc (3")
Accuracy:	Five-shot groups under 2" at 110 yds
Symbol:	SL-122SUS (2 ¾") SL-123 (3")



Most hunters would agree that we face more dangerous threats in an urban environment that we'll ever experience in the field. Hunters also tend to take the protection of their homes and families very seriously... which is why we offer several products specifically designed for that purpose.



Self Defense™ Less Lethal 12 ga 2 3/4" 1/2 oz

It is a sign of the times that if you were to kill an intruder, even if you believed you and your family were in grave danger, chances are you would still face lawsuits, harassment, and endless hours in court that can bankrupt the average person. Our Self Defense was created to stop an intruder in his tracks, but with far less chance of causing serious injury or death. It is a standard 12 gauge, 2 3/4" cartridge, firing our unique pink KLine® lead-free, easily deformable material. It is accurate to 20 yards, there is no risk of penetrating walls or windows, yet it delivers a stunning blow that will quickly stop a bad guy... giving you time to gain the upper hand and contact authorities.

And avoid finding *yourself* accused of being a bad guy.



Range (yards)	Muzzle	10	20
Velocity (ft./sec.)	315	295	272
Energy (ft./lbs.)	31	26.5	22.8
Path (inch)	-2.0	+0.0	-2.4
Optimum sighting-in distance 10 yards			

Weight:	1/2 oz
Barrel:	Rifled or smoothbore
Range:	0-20 yards
Symbol:	SL-122SDLL



If you are a law enforcement professional, Brenneke also makes several shotgun slugs tailored to specific threats and environments that are not offered to the general public. Those are not shown here. Please consult our Law Enforcement catalog or contact us for more information.



Tactical Home Defense 12 ga 2 3/4" 1 oz 20 ga 2 3/4" 3/4 oz

Since we introduced the Tactical Home Defense well over a decade ago, it has become one of our most popular all-around slugs in both 12 and 20 gauges. Its lighter recoil is designed to reduce excessive penetration in homes and urban environments that could harm innocent bystanders. This also makes it a pleasure to shoot, allowing quick, accurate followup shots, while being more manageable for smaller individuals.

Even though it was designed for law enforcement and home defense, many hunters find that it works quite well as defense against deer at medium ranges.

12 Gauge THD

Range (yards)	Muzzle	25	50	75	100
Velocity (ft./sec.)	1,378	1,181	1,066	968	896
Energy (ft./lbs.)	1,854	1,362	1,110	915	784
Bullet path (inch)	-1.5	+0.1	0.0	-2.4	-7.4
Optimum sighting-in distance 50 yards					

20 Gauge THD

Range (yards)	Muzzle	25	50	75	100
Velocity (ft./sec.)	1,250	1,112	1,018	950	896
Energy (ft./lbs.)	1,151	911	764	665	592
Bullet path (inch)	-2.0	+1.6	0.0	-8.1	-23.6
Optimum sighting-in distance 50 yards					

Weight:	1 oz (12 ga) 3/4 oz (20 ga)
Barrel:	Rifled or smoothbore
Range:	50 yards
Use:	Home protection
Accuracy:	Five-shot groups under 2" at 50 yards
Symbol:	SL-122THD (12 ga) SL-202THD (20 ga)



Home Protection Mini Slug 12 ga 2" 1 oz

Short 2" loads have become popular among shotgunners looking for less recoil, more accurate followup shots, greater magazine capacity and less expense. All these characteristics also make our Mini Slug ideal for home protection. They will not produce excessive penetration, our massive Classic slug delivering all of its power to the target. Note that the Mini Slug may not cycle properly in some semi-automatic shotguns.

Range (yards)	Muzzle	25	50	75	100
Velocity (ft./sec.)	1,334	1,080	946	890	785
Energy (ft./lbs.)	1,555	1,020	782	692	539
Bullet path (inch)	-2.0	+1.2	+1.5	-0.6	-5.4
Optimum sighting-in distance 80 yards					

Weight:	1 oz
Barrel:	Rifled or smoothbore
Range:	70 yards
Use:	Home protection, target
Accuracy:	Ten-shot groups under 4" at 30 yards
Symbol:	SL-122MS



Shoot Safely.

Unlike rifles, shotgun barrels are made of relatively thin steel, and great care must be taken to insure that there are no obstructions in the barrel or it can burst.

Never cover the muzzle with tape or anything else intended to keep rain or snow out. Always make sure your barrel is clean and in good condition; never use slugs in a rusted or pitted barrel, or a Damascus or other twist barrel.

Should you accidentally touch mud or snow with your muzzle, stop hunting immediately, unload your gun, and make sure there is nothing obstructing the barrel. Obstruction can also occur when using an improper caliber; for example, a 20 gauge shell will drop through the chamber of a 12 gauge shotgun, lodging midway down the barrel. If a 12 gauge shell is fired behind it, the barrel will burst. So, be absolutely certain you are using the correct gauge for your shotgun, and never mix gauges in your pocket or in containers.

Protect your cartridges from moisture and dampness, which can weaken the powder and cause incomplete ignition. The slug can get stuck partway up the barrel, and when the next round is fired, the barrel will burst. If you notice anything unusual when firing a cartridge, such as heavier- or lighter-than-normal recoil, an off sound that indicates a misfire, or if your shotgun fails to cycle properly, keep the gun pointed in a safe direction and completely check your barrel for obstructions before continuing to hunt or shoot.



Brenneke of America, L.P.
PO Box 1481
Clinton, IA 52733-1481 U.S.A.

800/753-9733
www.brennekeusa.com
info@brennekeusa.com

Brenneke also offers an extensive line of slugs and sabots for law enforcement professionals. If you would like to receive a catalog, please contact us.

© Brenneke of America, L.P. 2024 6/24

